

Below is a plain money envelope template that you can print off and/or color and design yourself . Just make sure that the middle section's design is turned upside down before you print it.

On the follow page is one simple Christmas money envelope template that you are welcome to print off and use yourself.

Instructions: Print, color or design if necessary, Fold top section down on dotted line and tape or glue across left side and top straight side, making sure you leave an opening to slide your money or check inside.

Glue or Tape side

G
l
u
e
o
r
T
a
p
e
s
i
d
e

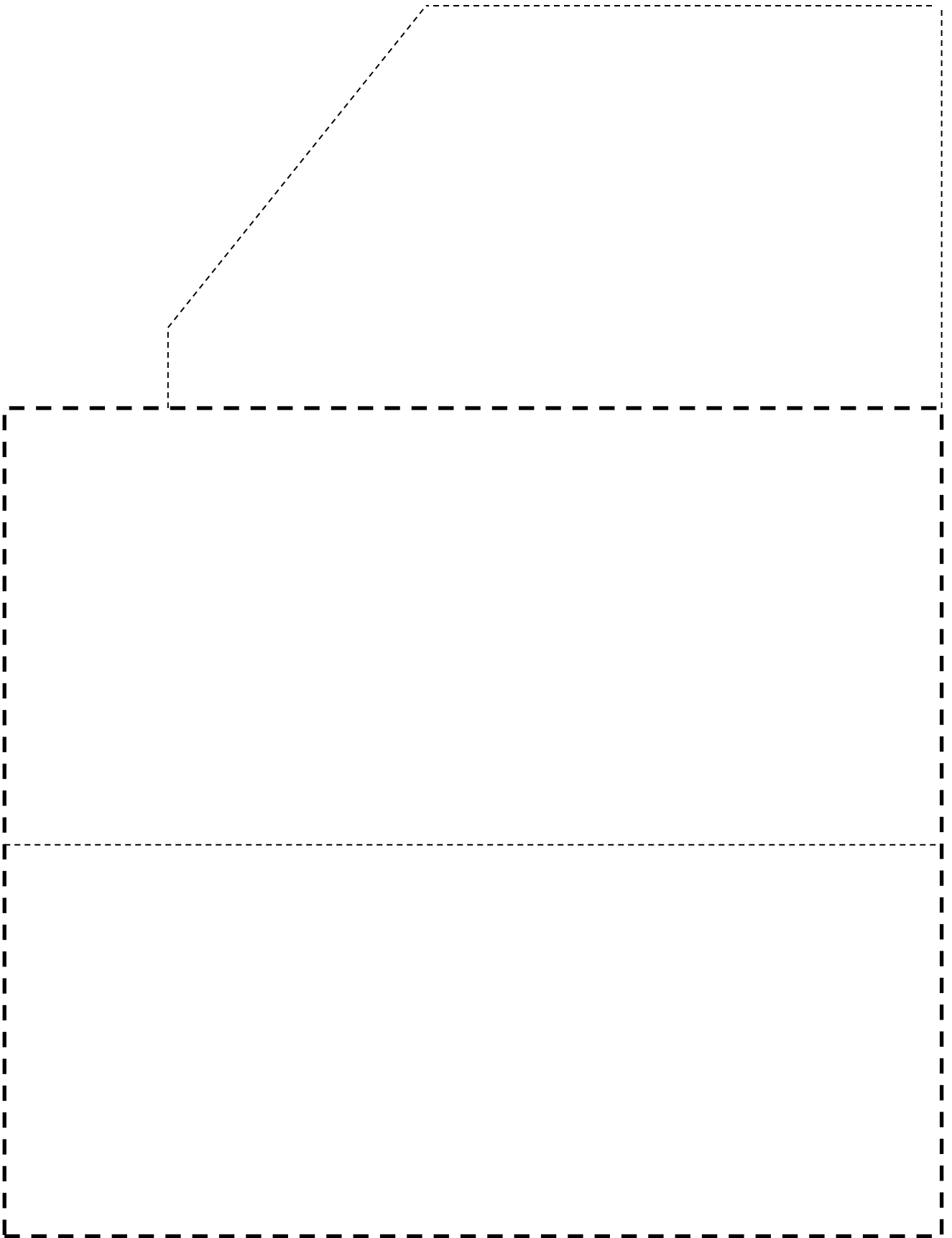
Fold

Design goes here upside down

Fold

Add whatever design you want here

Joyfulabundantlife.com



Merry Christmas

